

BLIK CRUSHERS SERIE B600/500-750-950, 2 ROTORS

POWERFUL, SILENT, ADAPTABLE, MULTI-PRODUCT

The B600 series crushers are bi-rotor crushers with rotating blades which can handle a wide range of materials.

They are powerful and silent and can easily be adapted to crush materials as wide ranging as wood, metal, rubber, paper, plastic and composites. They are equipped with a quick cleaning, cutting block; designed and patented by BLiK

The highly resistant, steel blades are mounted on a hexagonal axle and can be configured in a number of ways, to suit the material and quality of crush required.



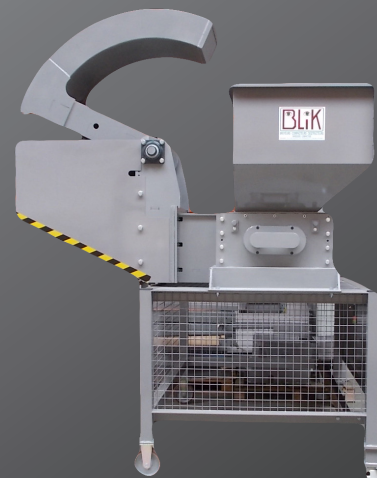
BLIK B600 Crusher with load by conveyor and electric arm



BLIK B600 Crusher standard version evacuation in steel barrel



BLIK B600 Crusher with horizontal hopper, evacuation endless screw and conveyor



BLIK B600 crusher with big electric arm

BLIK CRUSHERS SERIE B600/500-750-950, 2 ROTORS



BLIK B600-750 crusher evacuation of vibrating screen for separation



BLIK B600 Crusher : destruction of plastic containers: the only way to reduce their volume because if they are simply pressed, they gradually bounce back into shape.

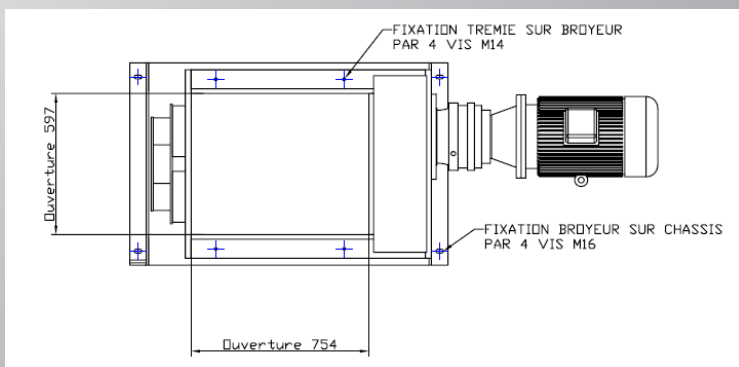
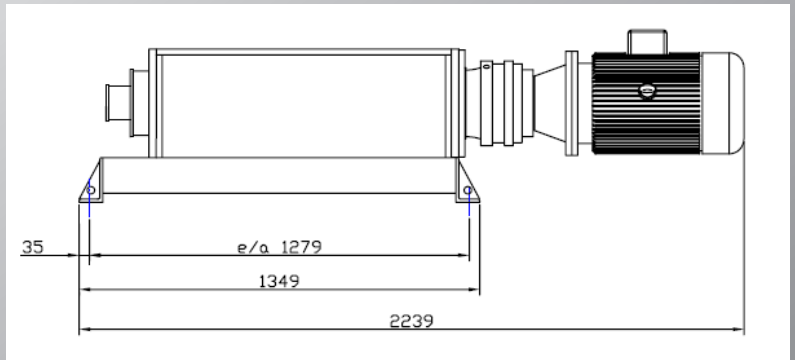
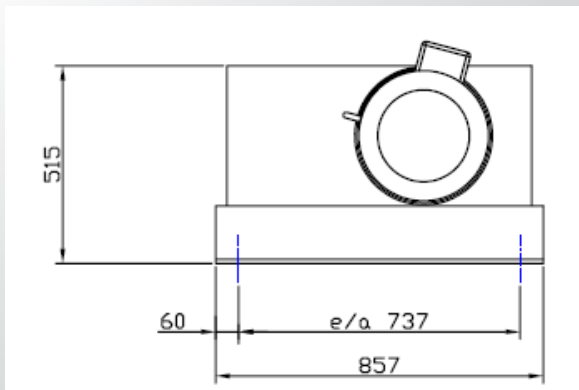


BLIK B600 Crusher with hydraulic skip-container



Complete Installation including a BLIK B600 Crusher (right) and a Q500 (left) with alimentation by conveyor and evacuation by endless screw

BLIK CRUSHERS SERIE B600/500-750-950, 2 ROTORS



Cutting block B600 with hopper opening of 750. Also available in 500 and 950

POSSIBLE OPTIONS

Matériels	Hourly Output (*)
VL tyres	2 to 4000 kg
100 to 200 liters steel barrels	30 to 40
200 liters plastic barrels	50 to 60
Documents and files	1000 to 1500 kg
Full PVC and PET bottles	12 to 15000
Glass bottles	15 to 20000
Batteries for cars and agricultural machinery	3 to 4000 kg
33 cl cans	20 to 40000
Pallets	20 to 40
Various fabrics and leathers	1000 to 2500 kg
Horns	500 to 1000 kg
Regular hotel and restaurant waste	10 to 15 m ³
Electronic circuits	500 à 1000 kg
Plants and bark	1000-3000 kg

(*) DEPENDING ON POWER, DENSITY, QUALITY OF CRUSH AND CONFIGURATION OF CUTTING BLOCK.

GENERAL TECHNICAL SPECIFICATIONS (*) B600 SERIES

Name	B600 - 500	B600-750	B600-950
Cutting block dimension mm	600 x 500	600 x 750	600 x 950
kW Power	18kw Tri. 400 V 50 hZ	18kw Tri. 400 V 50 hZ	18kw Tri. 400 V 50hZ
Hopper volume m ³	0,4 to 1	0,5 to 1	0,8 to 1,5
Cutting block dimension and motor-reducer - L x D x H (mm)	1945 x 900 x 515	2190 x 900 x 515	2385 x 900 x 515

ALSO AVAILABLE IN SPECIAL VERSIONS

	B600 - 500	B600-750	B600-950
Hopper electric arm	Option	Option	Option
Blade thickness (mm)	12/24/36	12/24/36	24/36
Rated rotation speed	19/13	19/13	19/13
Blade width	260-315	260-315	260-315
Number of hooks per blade	1-3-14	1-3-14	1-3-14
Electronic control	Schneider APC with display	Schneider APC with display	Schneider APC with display
Weight approx	1100 kg	1400 kg	1800 kg

STANDARD CRUSHERS ARE SUPPLIED IN WORKING ORDER - CUTTING BLOCK + MOTOR-REDUCER + ELECTRONIC CABINET HOPPERS AND SUPPORT CHASSIS ARE MADE TO ORDER

FRENCH DESIGN AND MANUFACTURE - "CE" CERTIFIED - 1 YEAR GUARANTEE (*) - SUBJECT TO TECHNICAL AND OPTICAL MODIFICATIONS